

Distinguishing acute uveitis and glaucoma

Some of the signs of these two conditions are similar, which can lead to confusion. This table summarises the main presenting clinical signs of acute cases.

Uveitis	Glaucoma
Red painful eye	Red eye due to episcleral congestion
Photophobia and blepharospasm	Pain manifested more in reduced activity and appetite
Eye is 'soft' with low intraocular pressure	Eye is 'hard' with increased intraocular pressure
Intraocular pressure <10mmHg	Intraocular pressure >25mmHg
Pupil is usually small = miosis	Pupil is usually large = mydriasis
Pupil may fail to dilate despite tropicamide	Do not dilate as this can raise pressure further
Vision present although may be reduced	Eye blind if > 24 hours duration – negative menace
Corneal endothelial deposits = keratic precipitates or hypopyon in the anterior chamber	Corneal oedema if pressure > 50mmHg
Changes in iris colour (red or 'muddy' brown) or contour (nodules)	

Chronic glaucoma may have buphthalmos (enlargement of the globe) and Haab's striae – cracks in Descemet's membrane visible as linear gray streaks on the cornea.

The clinical presentation of the two conditions can vary depending on the cause of the disease and the length of time affected.

Images are provided from a variety of species with uveitis and glaucoma below:



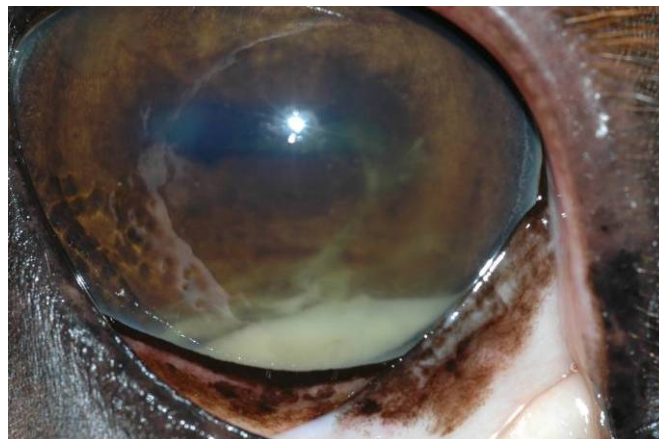
Dog with uveitis, in this case lens-induced uveitis secondary to acute onset intumescent cataracts, which were caused by diabetes mellitus.



Kitten with uveitis caused by FIP



Cow with uveitis caused by bacterial infection with *Listeria monocytogenes* – so called “Silage eye”. Several cows were affected.



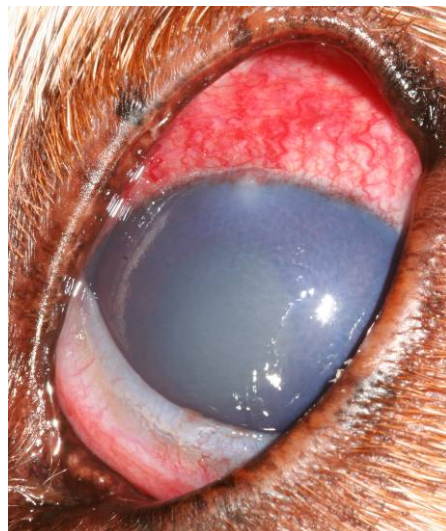
Thoroughbred horse with uveitis secondary to septicaemia



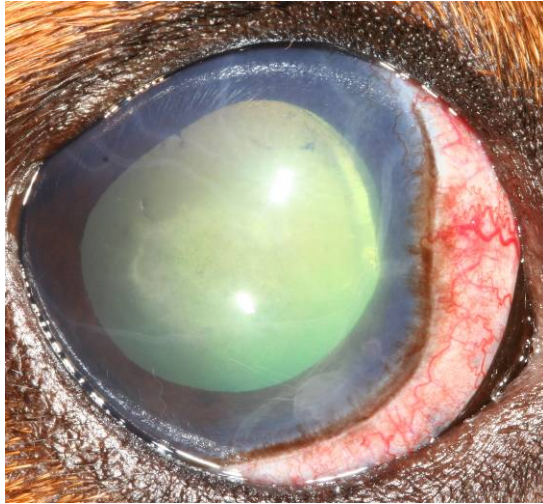
Cat with glaucoma of unknown cause



Cat with glaucoma and anterior lens luxation



Basset hound with acute onset glaucoma, exhibiting episcleral congestion, corneal oedema and mydriasis



Beagle dog with episcleral congestion, corneal oedema, mydriasis and Haab's striae



Pup with buphthalmos. A cat scratch injury which penetrated the corneal and lens had been left untreated causing glaucoma.